

**CITTA' DI ORBASSANO**

Città Metropolitana di Torino

**PIANO DI RECUPERO DI LIBERA INIZIATIVA**Fabbricati di civile abitazione in Via Cavour n. 23  
Censiti al C.T. Foglio 22 n. 262, 264, 655, 656, 657, 658, 893  
Area di PRGC 8.14.2**TAVOLA 4/4****STATO IN PROGETTO**

Dati metrici, verifiche, dimostrazione volumi.

**PROPRIETA'**

USSEGLIO GAUDI Odette

SSGDTT25047Z110Q

BUSSONE Fedele

BSSFLL48A30G087D

BUSSONE Piorgiorgio

BSSPGR56P30G087F

BUSSONE Brian

BSSBRN73C28E020C

BUSSONE Elisa

NSSLSE96D58E463L

**PROGETTISTI**

POGNANTE Geom. Carlo

PGNCR48L31B2165

Via Terzo Reggimento Alpini 9

10043 - ORBASSANO

Tel. 011 9031908 - carlo.pognante@geopec.it

GUIDONI Ing. Alessandro

GDNL5N60H211219Q

Via Angrogna 11

1013 - TORINO

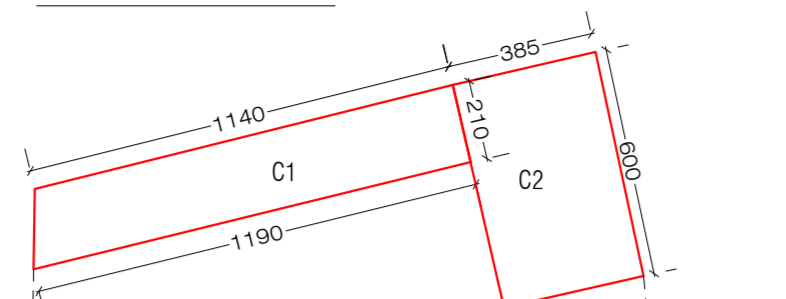
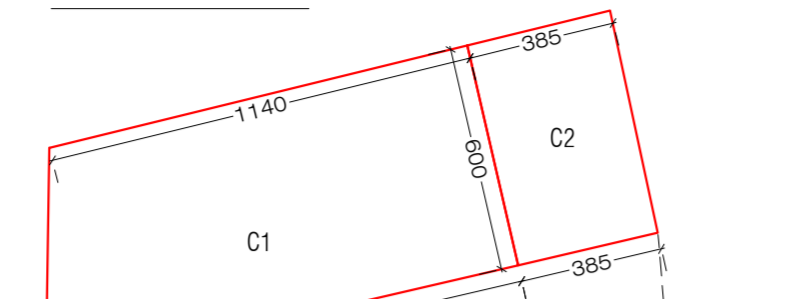
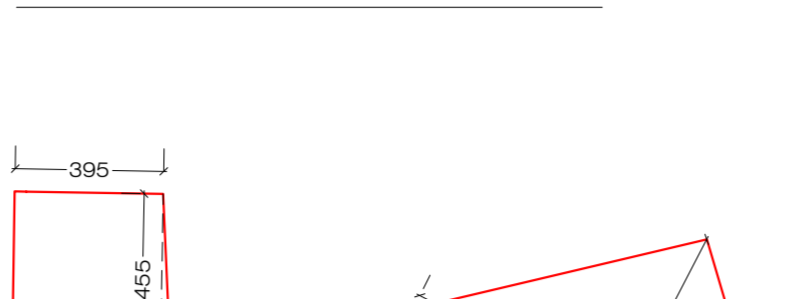
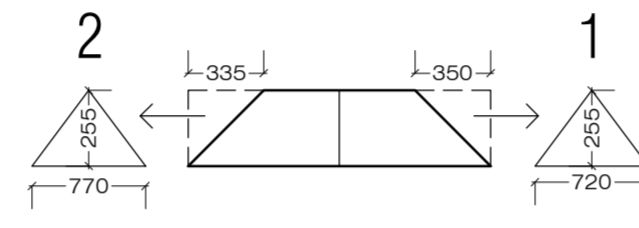
Tel. 335475381 - alessandro.guidoni@ingpec.eu

GIUGNO 2017

**CALCOLO VOLUME ESISTENTE**

(Schema di Calcolo Tav. 1/4)

	Superficie m <sup>2</sup>	VOLUME m <sup>3</sup>
<b>BLOCCO A</b>		
Piano Terreno		
(21,50 x 6,70)/2 + (21,50 x 6,90)/2	146,20	
m <sup>2</sup> 146,20 x h 3,70		540,94
Piano Primo		
(21,50 x 6,70)/2 + (21,50 x 6,90)/2 + (6,60 x 2,50)/2 + (6,60 x 2,70)/2	163,36	
m <sup>2</sup> 163,36 x h 3,45		563,59
Piano sottotetto		
(21,50 x 6,70)/2 + (21,50 x 6,90)/2 + (6,60 x 2,50)/2 + (6,60 x 2,70)/2	163,36	
m <sup>2</sup> 163,36 x h (1,95+3,90)/2 - m <sup>3</sup> 18 (v. schema tav. 1)		459,83
<b>BLOCCO B</b>		
Piano Terreno		
8,40 x 4,75	39,90	
m <sup>2</sup> 39,90 x h 3,70		147,63
Vano sottoscala		
1,90 x 4,40	8,36	
m <sup>2</sup> 8,36 x h m 1,20		10,03
Piano Primo		
(8,40 x 4,75) + (1,30 x 1,00) - (1,30 x 0,75)	40,23	
m <sup>2</sup> 40,23 x h 3,05		122,69
<b>BLOCCO C</b>		
Piano Terreno		
(17,80x5,00)/2+ (17,80x5,60)/2 + (1,30x1,40)	96,16	
m <sup>2</sup> 96,16 x h 2,65		254,82
Piano Primo		
(17,80 x 5,00)/2 + (17,80 x 5,60)/2	94,34	
m <sup>2</sup> 94,34 x h (3,10 + 5,15)/2		389,15
		<b>2.488,68</b>

**SCHEMI PER IL CALCOLO DELLE SUPERFICI E DEI VOLUMI****Piano Terreno****Piano Primo****Piano Secondo - Sottotetto****Volumi a dedurre - Fabb. a**

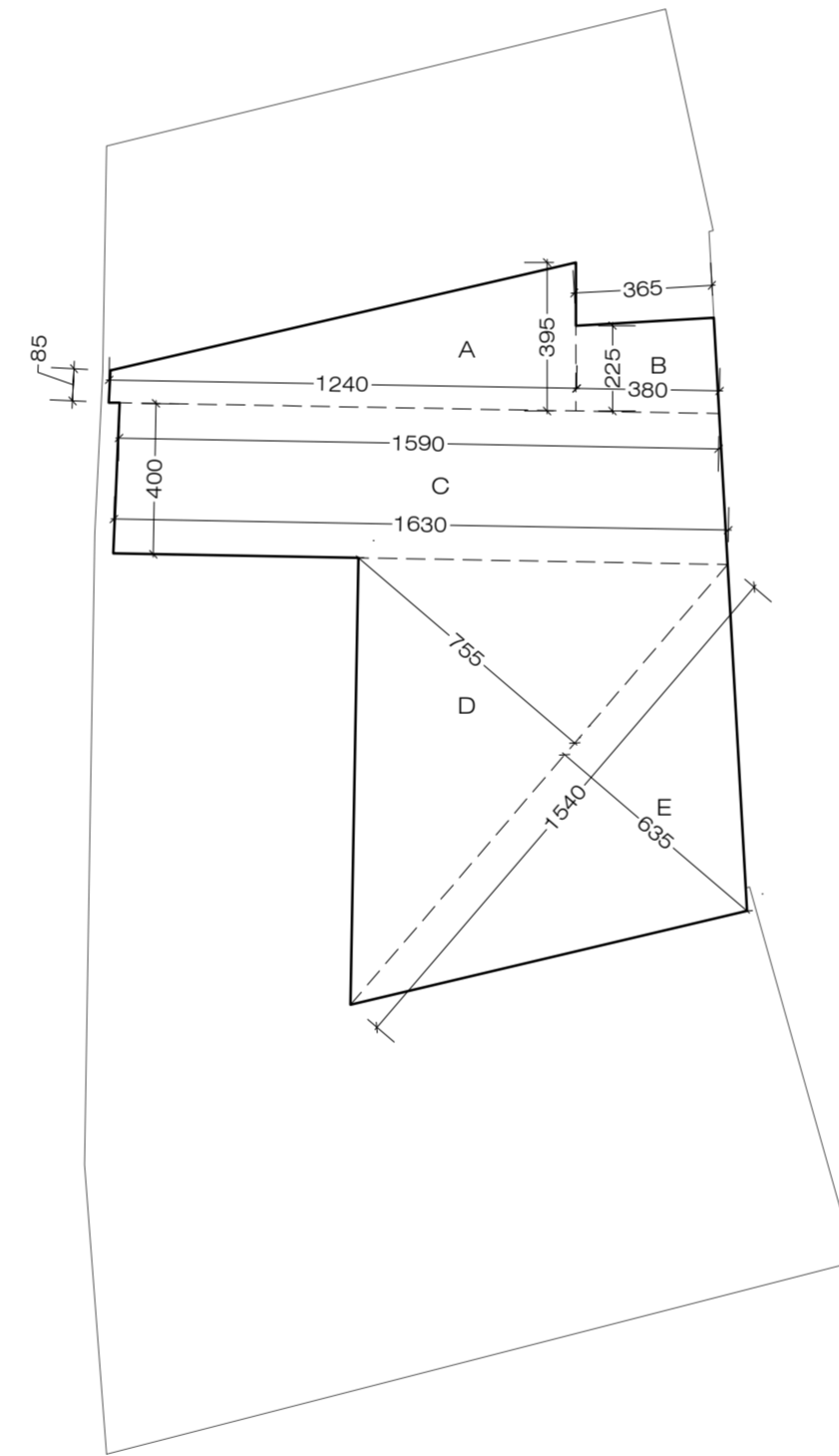
- 1- (((7,20x2,55)/2)x3,50)/3  
2- (((7,70x2,55)/2)x3,35)/3  
3- (((4,10x1,00)/2)x2,10)/3  
Totale: m<sup>3</sup> 23,11

**CALCOLO VOLUME IN PROGETTO**

	Superficie m <sup>2</sup>	VOLUME m <sup>3</sup>
<b>BLOCCO A</b>		
Piano Terreno		
A1 (8,75+9,90)/2x7,45	69,47	
A2 (10,65x5,35)/2 + (10,65x5,05)/2 + (0,65+0,55)/2x5,85	58,89	128,36
m <sup>2</sup> 128,36 x h 3,15		404,34
Piano primo		
A1 (3,95+4,20)/2x4,55 + (4,20x1,05)/2 + (7,25+8,45)/2x7,45 + (1,45x3,55) + (1,20x2,40)	87,26	
A2 (2,40x2,45) + (11,05x5,60)/2 + (11,05x5,20)/2	65,55	152,81
m <sup>2</sup> 152,81 x h 3,10		473,70
Piano secondo - sottotetto		
A1 (3,95+4,20)/2x4,55 + (4,20x1,05)/2 + (7,25+8,45)/2x7,45 + (1,45x3,55) + (1,20x2,40)	87,26	
A2 (2,40x2,45) + (11,05x5,60)/2 + (11,05x5,20)/2	65,55	152,81
m <sup>2</sup> 152,81 x h 3,90 = m <sup>3</sup> 595,96		
a dedurre m <sup>3</sup> 595,96 - (7,20x2,55)/2x3,50/3 + mc 23,11 (7,70x2,55)/2x3,35/3 + (4,1x1,0)/2x2,10/3 = (595,96-23,11)		572,84
<b>BLOCCO B</b>		
Piano Terreno + Piano Primo		
8,40 x 6,30		52,92
m <sup>2</sup> 52,92 x h 6,35 (x2 piani)		336,04
<b>BLOCCO C</b>		
Piano Terreno		
C1 (11,40+11,90)/2x2,10	24,47	
m <sup>2</sup> 24,47 x h 2,10		51,38
C2 (3,85x6,00)		23,10
m <sup>2</sup> 23,10 x h 2,80		64,68
Piano primo		
C1 (11,40+12,85)/2x6,00	72,75	
m <sup>2</sup> 72,75 x h 2,70		196,43
C2 (3,85x6,00)		23,10
m <sup>2</sup> 23,10 x h 2,90		66,99
		<b>2.166,39</b>

**VOLUME IN PROGETTO m<sup>3</sup> 2.166,39 < m<sup>3</sup> 2.488,68 VOLUME ESISTENTE****PARCHEGGIO PRIVATO**SUPERFICIE A PARCHEGGIO RICHIESTA  
2167,57 x 1 m<sup>2</sup>/10 m<sup>2</sup> = 216,76 m<sup>2</sup>**SUP. A PARCH. INTERRATO IN PROGETTO**

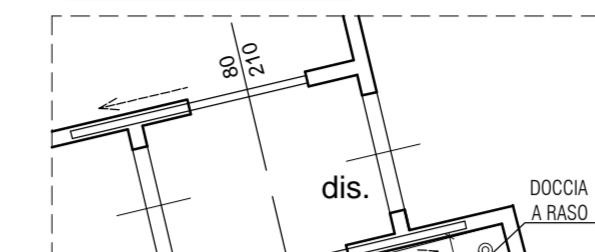
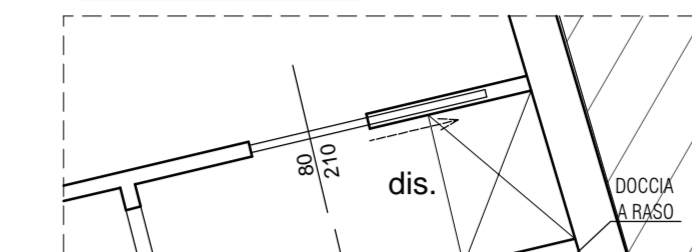
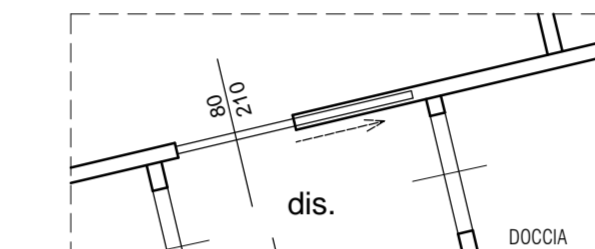
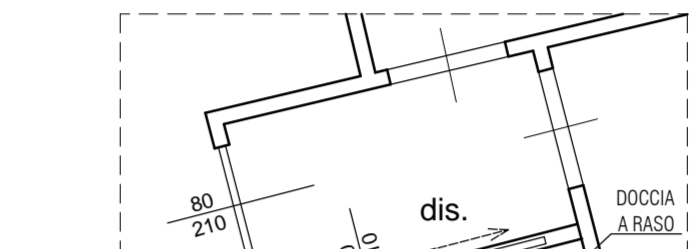
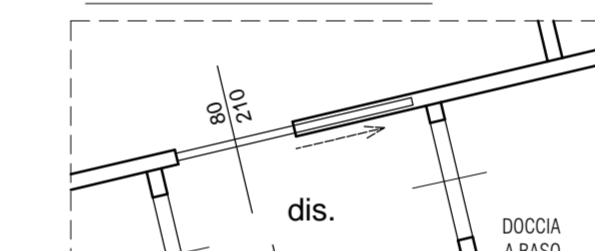
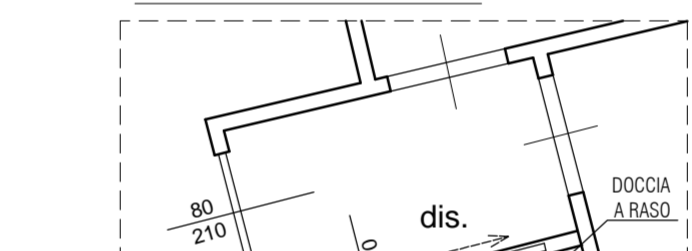
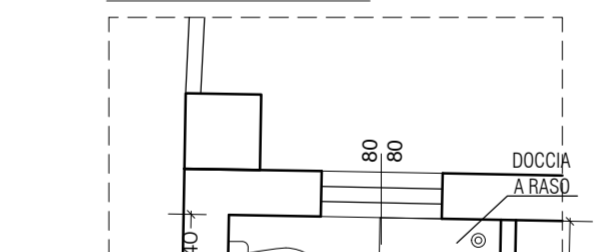
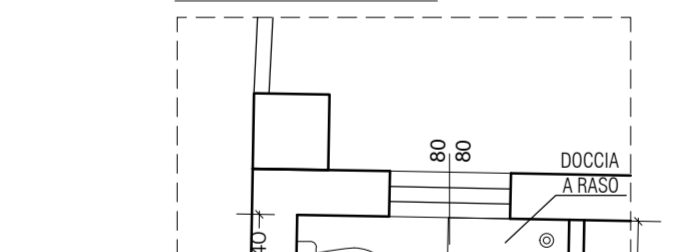
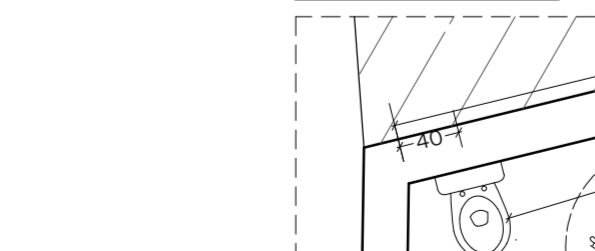
BOX 1	[(7,20+7,90)/2]x2,70	= 20,99 m <sup>2</sup>
BOX 2	[(7,95+8,65)/2]x2,70	= 22,41 m <sup>2</sup>
BOX 3	[(6,65+5,85)/2]x2,70	= 15,53 m <sup>2</sup>
BOX 4	(3,85x6,00)	= 23,10 m <sup>2</sup>
BOX 5	[(3,90+2,65)/2]x7,25	= 23,74 m <sup>2</sup>
BOX 6	[(7,20+7,15)/2]x2,60	= 18,66 m <sup>2</sup>
BOX 7	[(7,15+7,10)/2]x2,65	= 18,88 m <sup>2</sup>
BOX 8	[(4,40+4,65)/2]x5,25	= 23,76 m <sup>2</sup>
BOX 9	(8,30x3,00)	= 24,90 m <sup>2</sup>
Area esclusiva 1	(4,80x2,20)	= 10,56 m <sup>2</sup>
Area esclusiva 2	(4,80x2,20)	= 10,56 m <sup>2</sup>
Area esclusiva 3	(4,80x2,20)	= 10,56 m <sup>2</sup>
Area esclusiva 4	(4,80x2,20)	= 10,56 m <sup>2</sup>
Area esclusiva 5	(4,25x1,80)	= 7,65 m <sup>2</sup>
Area esclusiva 6	(4,40x2,20)	= 9,68 m <sup>2</sup>
Area esclusiva 7	[(2,50+2,20)/2]x4,40	= 10,34 m <sup>2</sup>
SUP TOTALE		261,28 m <sup>2</sup> > 216,76 m <sup>2</sup>

**DIMOSTRAZIONE SUPERFICIE A VERDE****ABITANTI INSEDIABILI**2166,39 m<sup>2</sup> / 90 m<sup>2</sup>/ab = 24,07 ab. arr. 24 ab.**SUPERFICIE A VERDE RICHIESTA (PERMEABILE)**3 m<sup>2</sup>/ab o minimo 60 m<sup>2</sup>24 ab. x 3 m<sup>2</sup>/ab = 72,00 m<sup>2</sup>**SUP. A VERDE IN PROGETTO (PERMEABILE)**

A	[(0,85+3,95)/2]x12,40	= 29,76 m <sup>2</sup>
B	[(3,65+3,80)/2]x2,25	= 8,38 m <sup>2</sup>
C	[(15,90+16,30)/2]x4,00	= 64,40 m <sup>2</sup>
D	(15,40x7,55)/2	= 58,14 m <sup>2</sup>
E	(15,40x6,35)/2	= 48,90 m <sup>2</sup>
Totale		= 209,57 m <sup>2</sup> > 72,00 m <sup>2</sup>

**DIMOSTRAZIONE ADATTABILITA' BAGNI**

ai sensi del D.M. 236/89 e s.m.i.

**A1 PIANO TERRA****A2 PIANO TERRA****A1 PIANO PRIMO****A2 PIANO PRIMO****A1 PIANO SECONDO****A2 PIANO SECONDO****B PIANO TERRA****B PIANO PRIMO****C PIANO PRIMO****VERIFICA SUPERFICI DI AERAZIONE ED ILLUMINAZIONE**

Locale	Dimensioni	Superficie	1/8	Dimensioni Superficie finestra	Superficie finestra	VERIFICA
<b>PIANO TERRENO</b>						
<b>A1</b>						
SOGGIORNO- CUCINA	(5,05x4,10)+ (1,85x3,35)	26,90	3,36	(1,20x2,40)+ (0,80x1,60)+ (0,80x2,40)	6,08	positiva
CAMERA 1	[(4,60+4,00)/2]x3,85	16,56	2,07	(1,20x1,60)+ (1,20x2,40)	4,80	positiva
CAMERA 2	[(3,55+3,05)/2]x3,00	9,90	1,24	(1,20x1,60)	1,92	positiva
BAGNO	(1,80x2,15)	3,87	0,48	(0,80x0,80)	0,64	positiva
<b>A2</b>						
SOGGIORNO- CUCINA	(3,70x2,80)+ (1,90x1,80)	26,30	3,29	(1,20x2,40)+ (0,80x0,80)+ (0,80x1,60)	4,80	positiva
CAMERA	[(4,00+4,20)/2]x3,60	14,76	1,85	(1,20x2,40)	2,88	positiva
BAGNO	(1,85x2,80)	5,18	0,65	(0,80x1,60)	1,28	positiva
<b>B</b>						
SOGGIORNO- CUCINA	(5,70x3,50)+ (1,90x1,80)	21,18	2,65	(1,20x1,60)+ (1,20x2,40)	4,80	positiva
CAMERA	(3,80x4,30)	16,34	2,04	(1,20x2,40)	2,88	positiva
BAGNO	(2,10x1,80)	3,78	0,47	(0,80x0,80)	0,64	positiva
<b>PIANO PRIMO</b>						
<b>A1</b>						
CUCINA	(5,68x2,71)/2+ (5,68x2,89)/2+ (3,62x0,61)/2+ [(5,77+6,34)/2]x3,40+ (0,95x1,30)	15,90	1,99	2x(1,20x1,60)	3,84	positiva
SOGGIORNO	[(3,60+4,15)/2]x3,40	22,93	2,87	2x(1,20x2,40)	5,76	positiva
CAMERA 1	[(3,60+4,15)/2]x3,40	13,18	1,65	(1,20x1,60)	1,92	positiva
CAMERA 2	(3,30x3,15)	10,40	1,30	(0,85x1,60)	1,36	positiva
BAGNO 1	(2,20x1,80)	3,96	0,50	(0,80x0,80)	0,64	positiva
BAGNO 2	(2,30x2,20)	4,60	0,58	(0,80x0,80)	0,64	positiva
<b>A2</b>						
SOGGIORNO- CUCINA	(3,40x3,50)+ (2,35x3,30)+ (1,80x2,45)	24,07	3,01	(0,80x1,60)+ (1,20x2,40)	4,16	positiva
CAMERA 1	[(3,95+4,15)/2]x3,50	14,18	1,77	(1,20x1,60)	1,92	positiva
CAMERA 2	[(3,00+3,10)/2]x3,00	9,15	1,14	(0,80x1,60)	1,28	positiva
BAGNO	(2,10x1,80)	3,78	0,47	(0,80x0,80)	0,64	positiva
<b>B</b>						
SOGGIORNO- CUCINA	(5,70x4,40)	25,08	3,14	(1,20x1,60)+ (1,20x2,40)	4,80	positiva
CAMERA	(3,80x3,30)	12,54	1,57	(1,20x2,40)	2,88	positiva
BAGNO	(2,10x1,80)	3,78	0,47	(0,80x0,80)	0,64	positiva
<b>C</b>						
CUCINA	(3,30x4,00)	13,20	1,65	(1,20x2,40)	2,88	positiva
SOGGIORNO	[(3,50+3,60)/2]x5,40	19,17	2,40	(1,20x2,40)	2,88	positiva
CAMERA 1	(2,50x4,00)	10,00	1,25	(1,20x2,40)	2,88	positiva
CAMERA 2	[(3,70+4,55)/2]x3,45	14,23	1,78	(1,20x2,40)	2,88	positiva
BAGNO 1	(2,40x1,70)	4,08	0,51	(0,80x1,60)	1,28	positiva
BAGNO 2	[(3,70+3,25)/2]x1,70	5,91	0,74	(0,80x2,40)	1,92	positiva
SOPRALCO	(5,40x3,50)	18,90	2,36	(1,20x2,40)	2,88	positiva
<b>PIANO SECONDO</b>						
<b>A1</b>						
CUCINA- SOGGIORNO	(5,68x2,71)/2+ (5,68x2,89)/2+ (3,62x0,61)/2+ [(5,77+6,34)/2]x3,40+ (0,95x1,30)+ (0,10x2,42)	39,07	4,88	3x(1,20x0,80)/2+ (1,20x2,10)+ (0,80x2,90)+ (0,80x0,50)	5,08	positiva
CAMERA 1	[(3,60+4,15)/2]x3,40	13,18	1,65	(1,20x0,80)/2+ (0,80x2,10)+ (0,80x0,90)	2,88	positiva
CAMERA 2	(3,30x3,15)	10,40	1,30	(0,80x2,10)+ (0,80x0,90)	2,40	positiva
BAGNO 1	(2,20x1,80)	3,96	0,50	[(0,80x0,80)/2]+ (0,80x0,50)	0,72	positiva
BAGNO 2	(2,30x2,20)	5,06	0,63	(0,80x0,50)	0,64	positiva
<b>A2</b>						
SOGGIORNO- CUCINA	(3,40x3,50)+ (2,35x3,30)+ (1,80x2,45)	24,07	3,01	(0,80x2,10)+ (1,20x2,10)+ 3x(0,80x0,90)	6,36	positiva
CAMERA 1	[(3,95+4,15)/2]x3,50	14,18	1,77	(1,20x2,10)	2,52	positiva
CAMERA 2	[(3,00+3,10)/2]x3,00	9,15	1,14	(0,80x2,10)+ (0,80x0,90)	2,40	positiva

**SCHEMI DI CALCOLO ALLOGGIO 'A1' SOGGIORNO - CUCINA**